



## ***Tried and true***

Since our beginning in 1909, TAJIMA has continued a tradition of excellence by continually striving to further develop and improve our products to surpass the expectations of our customers. Our goal is for each encounter to develop into a long association.







## ***TAJIMA creates "Compact & Solid" The original high quality lasts throughout the life of the tool***

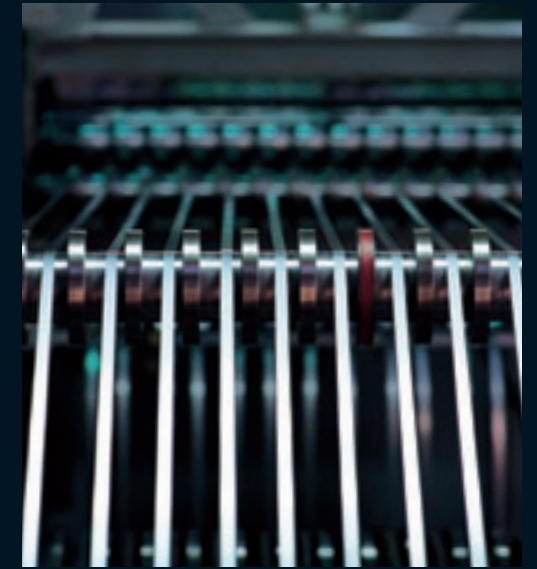
Compact but easily breakable...  
Strong but heavy and awkward...  
Unrefined products like this are everywhere.

Compact, yet having a substantial, solid feel.  
The initial superior quality lasts from the  
beginning throughout the lifetime of our  
products.

Spanning approximately 100 years, TAJIMA  
has focused on these two concepts.  
They have penetrated the spirits of all of us.

Careful selection of materials and efficient  
design, together with the effort of each  
person, result in the achievement of  
accuracy. Through effort from every angle,  
the original quality lasts throughout the  
lifetime of the product. This is the tool's true  
value.

From the moment it's grasped, the TAJIMA  
tool expresses a new sense of quality.





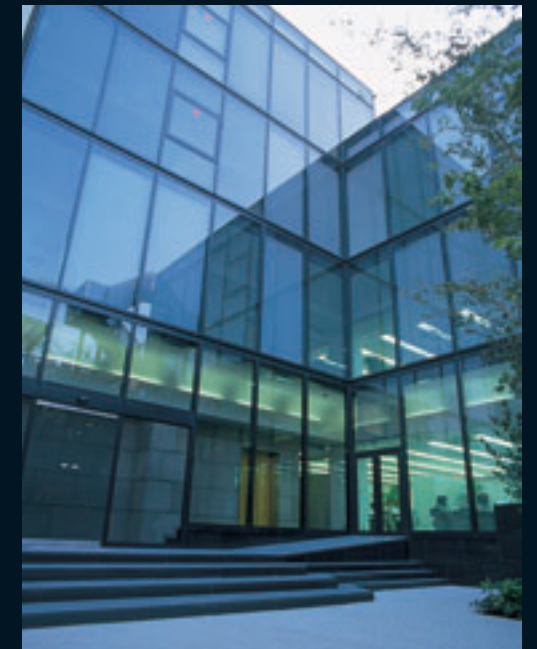
## *Product development is an "Art"*

"What is a good tool?" There are many answers to this age-old question. TAJIMA asks 800 users and 10 retail stores to tell us of their actual experience. At TAJIMA, product development begins with direct observation.

After clearly identifying and understanding users' needs in today's situation, TAJIMA's 40 product development members take time to allow ideas to form in a sort of "fermentation process."

We don't take input from 100 people and divide it by 100, but rather we integrate their requirements to bring to life a product greater than a sum of its parts.

This "fermentation process" breathes life into each manufactured product to inspire the user.





# Genuine TAJIMA tools fulfill the needs and surpass the expectations of customers worldwide

## TAJIMA TOOL CORPORATION

Established in 1909 as a manufacturer of steel and woven measuring tapes, TAJIMA TOOL CORPORATION now produces over 1,000 hand tools and supplies renown globally for their durability, function, and value. We utilize the most advanced production technology and quality control techniques to ensure that our products are of the highest quality.

### CORPORATE PROFILE

#### President:

Yosuke Tajima

#### Headquarters:

TAJIMA TOOL CORPORATION (JAPAN)  
3-4-3 Azusawa Itabashi-ku, Tokyo 174-8503 Japan  
Phone: +81-3-3969-6603  
Fax: +81-3-3969-7402

#### Establishment:

January 12, 1909

#### Capital:

JPY64,000,000 (Group total: JPY830,000,000)

#### Employees:

304 (Group total: 830)

#### Domestic Sales Branches/Companies

Sapporo, Sendai, Tokyo (Itabashi, Chiyoda),  
Kanagawa, Nagoya, Osaka, Miki, Hiroshima,  
Fukuoka, Sanjo Tajima Tool Corporation

#### Overseas Sales Companies:

Shanghai Tajima Tool Corporation (China)  
Tajima AG (Switzerland)  
Tajima Tool Corporation (USA)  
Taiwan Tajima Tool Corporation (Taiwan)  
Tajima Asabanu Tools Ltd. (India)

#### Factories:

Chichibu Factory (Japan)  
Yokoze Factory (Japan)  
Maita Factory (Japan)  
Beppu Factory (Japan)  
Shanghai Tajima Tool Corporation (China)  
Tajima Asabanu Tools Ltd. (India)

#### Other Affiliated Company:

Tajima Reform Systems Corporation

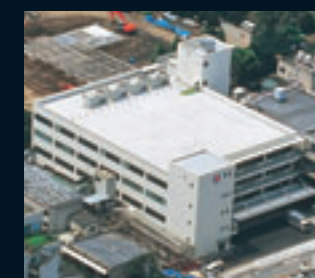
#### Main Products:

Measuring tapes, utility knives, hand saws, plumb-bob setters, angle meters, power tool accessories, screwdrivers, levels, laser tools



### HISTORY

- 1909 Tajima Industry Co., Ltd. established in Tokyo by first president, Shogoro Tajima
- 1932 Successful manufacture of the first convex measuring tape in Japan
- 1945 Change in status to joint-stock corporation
- 1955 Presidency assumed by Koichi Tajima
- 1965 Export department established
- 1976 Presidency assumed by Yosuke Tajima
- 1983 Chichibu Factory established; all production of measuring tapes transferred to new factory
- 1987 Yokoze Factory established for complete production line of utility knives and blades
- 1989 New headquarters building constructed  
Taiwan sales office established
- 1993 Company name changed to TAJIMA TOOL CORPORATION
- 1994 USA and European sales offices established
- 1995 Shanghai Tajima Tool established  
Tajima Asabanu Tools established in India  
Remodeling market entry
- 2000 Manufacture of laser tools begun at Yokoze Factory



### ISO CERTIFICATION ACHIEVED

TAJIMA Headquarters and Factories have been ISO certified by Bureau Veritas Quality International (BVQI), the certifying organization. Shanghai Tajima Tool acquired ISO 9002 certification.

Not satisfied with looking back on past achievements, TAJIMA continues to strive for innovation, development and manufacture of the highest quality tools in the world.







# ***The Tools of Choice***

TAJIMA's compact and solid tools represent high quality that lasts from the beginning throughout their lifetime. Tools that provide not satisfaction but inspiration. Our goal is for each encounter to develop into a long association.



# Tajima

CORPORATE PROFILE

**Tajima**

TAJIMA TOOL CORP. (JAPAN)

3-4-3 Azusawa

Itabashi-ku, Tokyo 174-8503 Japan

Phone: +81-3-3969-6603

Fax: +81-3-3969-7402

